



## Forensic Short Course

# Postmortem CT Interpretation

## 2 Day Workshop: Monday & Tuesday 7 & 8 May 2018

### ISFRI 2018

ISFRI 2018 is the combined 7<sup>th</sup> Annual Congress of the International Society of Forensic Radiology and imaging (ISFRI) and 13<sup>th</sup> Anniversary Meeting of the International Association of Forensic Radiographers (IAFR). The conference runs from Thursday 10 May - Saturday 12 May. As a prequel, 4 workshops are being staged, including the 'Post-mortem CT Interpretation' workshop.

### Workshop Description

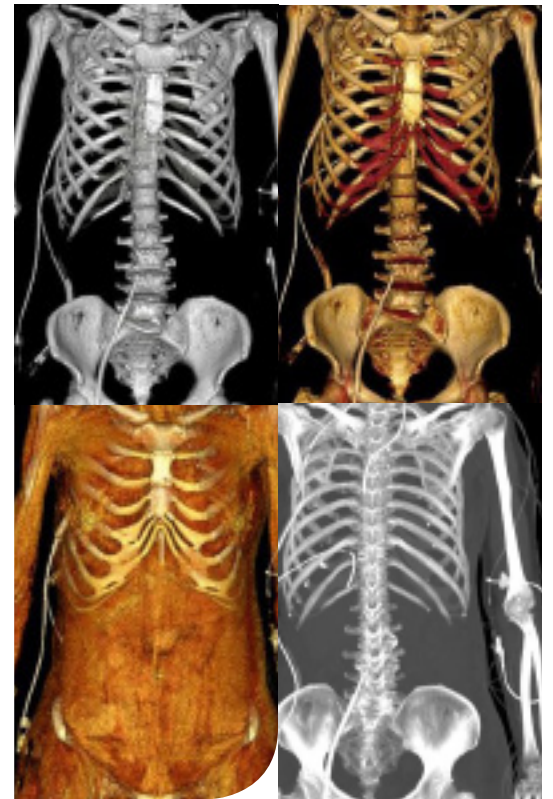
This intensive workshop is designed for forensic pathologists (including trainees) and radiologists (including trainees) with an interest in forensic imaging, as well as radiographers and general pathologists.

The workshop consists of 2 days of didactic lectures on the principles and practice of post-mortem CT and the application of CT techniques to death investigation. There will be a workshop completion quiz and participants will have an opportunity to visit the mortuary-based CT scanner.

### Cost

Registration fee: \$1,320.00 inclusive of GST.

If a registrant needs to withdraw from the workshop there will be a full refund minus an administrative fee of \$150 up to 2 months prior to the workshop start date, 50% refund up to 1 month prior and no refund if less than 1 months' notice is given.



### How to Register

Registrations are strictly limited to 24. For more information and to register, please go to the ISFRI 2018 website at [www.ISFRI2018.com](http://www.ISFRI2018.com)



### Workshop Convenor

Dr Chris O'Donnell  
Consultant Forensic Radiologist,  
VIFM & Adjunct Senior Lecturer,  
Department of Forensic Medicine,  
Monash University

### Location

Victorian Institute of Forensic Medicine  
Plueckhahn Lecture Theatre.  
65 Kavanagh Street, Southbank  
VIC 3006 Australia.

## Workshop Objectives

At the end of the workshop participants should have:

- a basic understanding of the physics and principles of CT scanning
- confidence in viewing post-mortem CT images
- an understanding of the artefacts associated with CT scanning
- knowledge of post-mortem CT correlates of the pathological artefacts of death
- the ability to recognize forensically significant CT findings in all anatomical areas
- the ability to integrate CT findings into the work practices of a forensic pathologist and understand the benefits and limitations of post-mortem CT to a forensic pathologist
- awareness of newer post-mortem CT techniques such as angiography and guided-biopsy
- familiarity with Victoria's coronial system and the impact that CT scanning has on the workings of a coroner

## Preliminary Program

### Workshop Day 1

Introduction to post-mortem imaging

Artefacts of death on PMCT

PMCT in the chest

PMCT in the brain

PMCT angiography

PMCTA - how we do it

PMCT in the abdomen and pelvis

### Workshop Day 2

PMCT in paediatrics including NAI

PMCT in DVI

PMCT in the MSK system including the spine

Presentation of PMCT to court

Forensic aspects of PMCT

Quiz

Conclusion of the workshop



Meals and refreshments will be provided each day